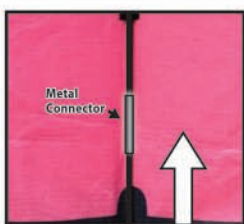
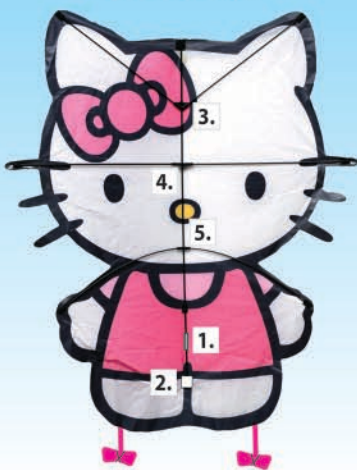
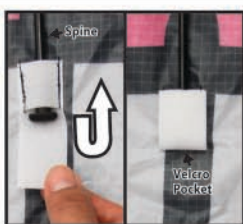


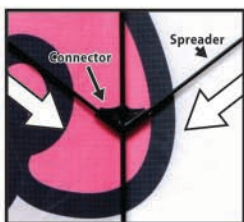
## Back of the Kite



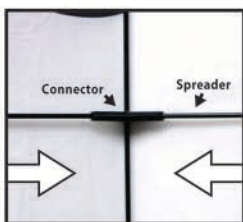
1. Connect Spine at Metal Connector.



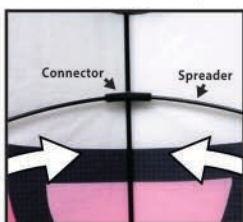
2. Push up Spine and secure Velcro Pocket.



3. Insert Spreader left and right into Connector.



4. Insert Spreader left and right into Connector.



5. Insert Spreader left and right into Connector.

## Front of the Kite



SkyStreamers™



3. Unwind SkyStreamers™ and for more stability, tie them together.

4. Attach the QuikClip® to Bridle Loop. Top Loop for light to medium winds, Bottom Loop for strong winds.

